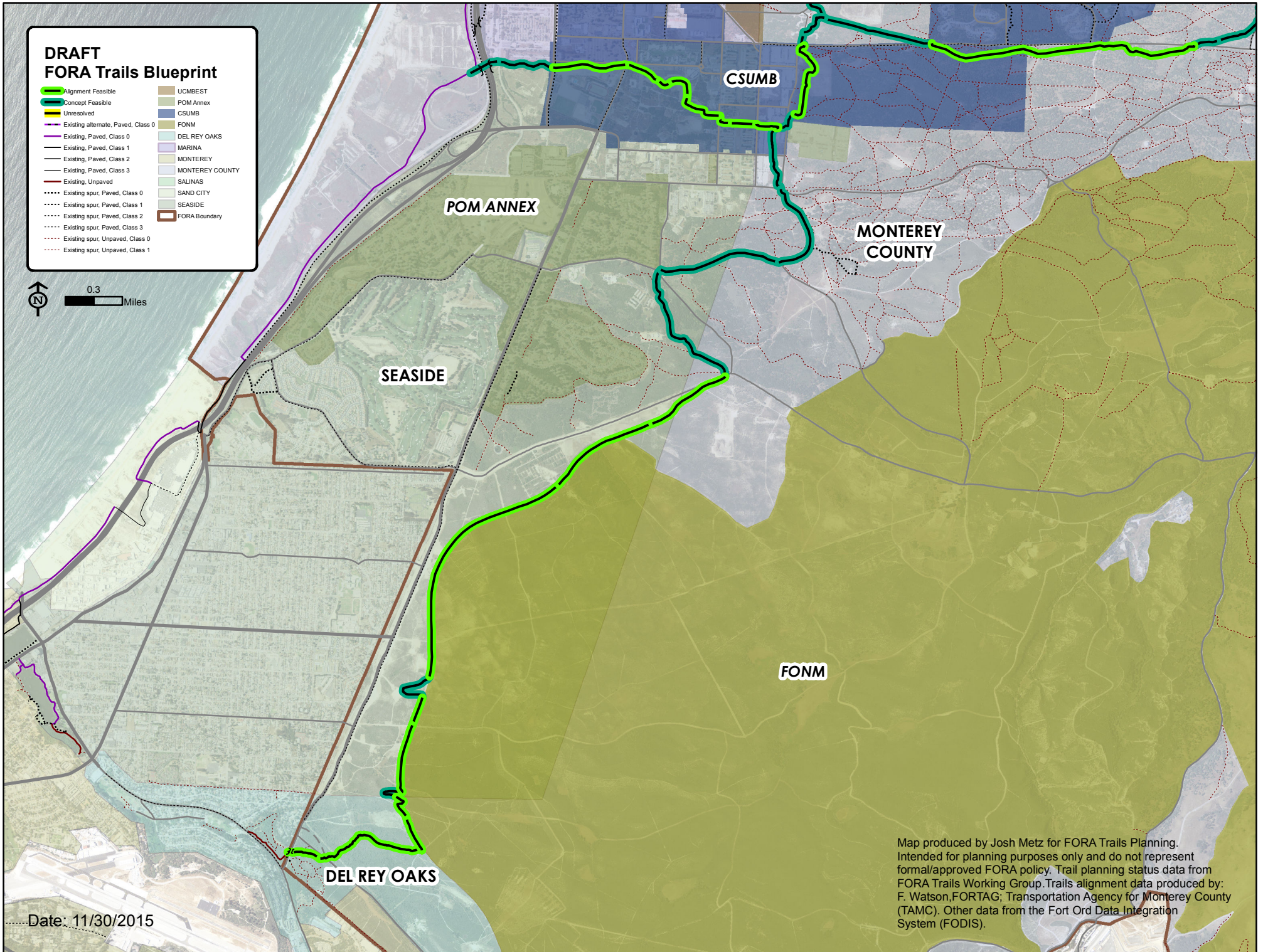
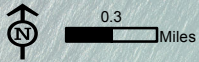


DRAFT FORA Trails Blueprint

- Alignment Feasible
 - Concept Feasible
 - Unresolved
 - Existing alternate, Paved, Class 0
 - Existing, Paved, Class 0
 - Existing, Paved, Class 1
 - Existing, Paved, Class 2
 - Existing, Paved, Class 3
 - Existing, Unpaved
 - - - Existing spur, Paved, Class 0
 - - - Existing spur, Paved, Class 1
 - - - Existing spur, Paved, Class 2
 - - - Existing spur, Paved, Class 3
 - - - Existing spur, Unpaved, Class 0
 - - - Existing spur, Unpaved, Class 1
- UCMBEST
 - POM Annex
 - CSUMB
 - FONM
 - DEL REY OAKS
 - MARINA
 - MONTEREY
 - MONTEREY COUNTY
 - SALINAS
 - SAND CITY
 - SEASIDE
 - FORA Boundary



Date: 11/30/2015

Map produced by Josh Metz for FORA Trails Planning. Intended for planning purposes only and do not represent formal/approved FORA policy. Trail planning status data from FORA Trails Working Group. Trails alignment data produced by: F. Watson, FORTAG; Transportation Agency for Monterey County (TAMC). Other data from the Fort Ord Data Integration System (FODIS).